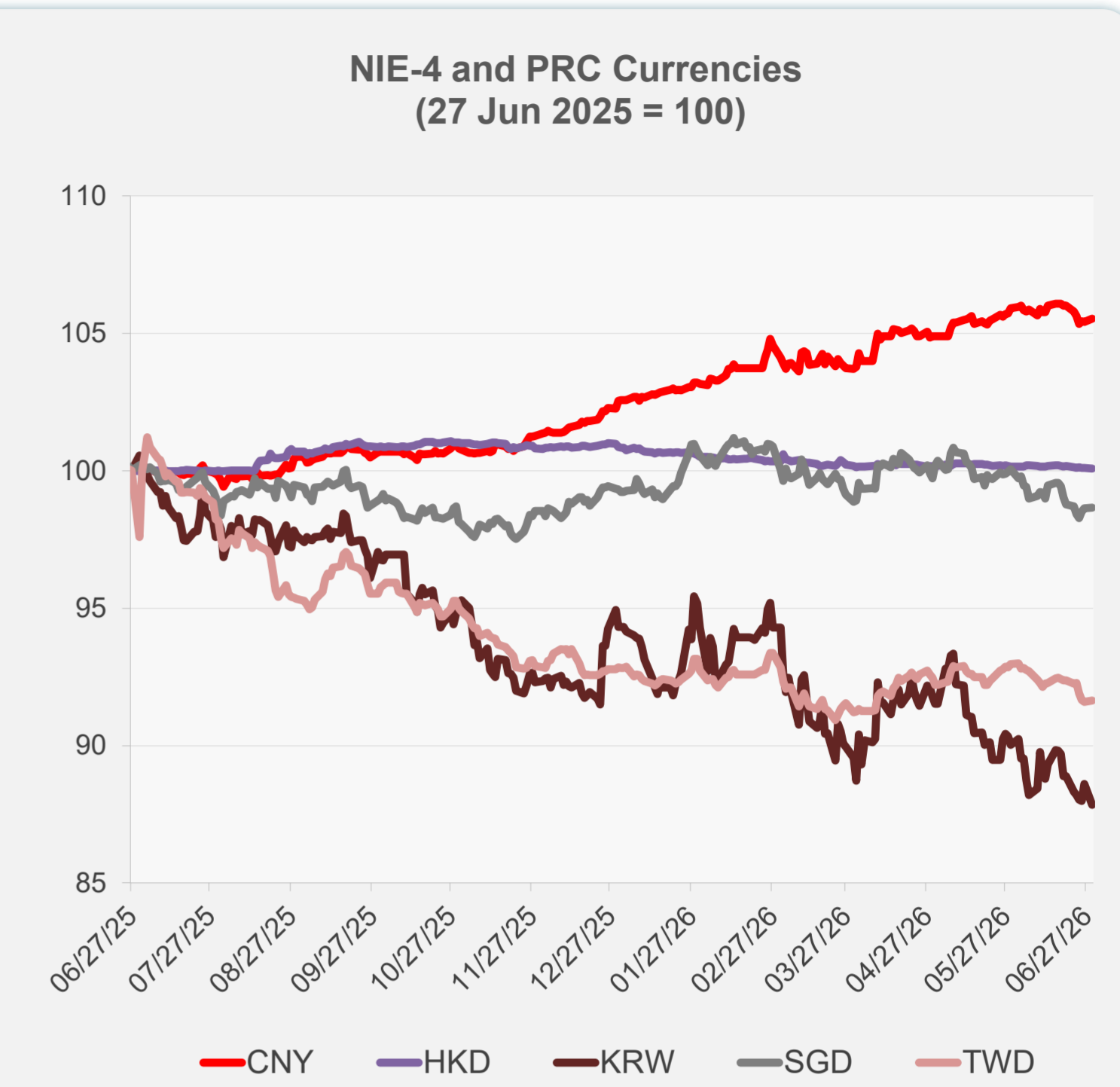
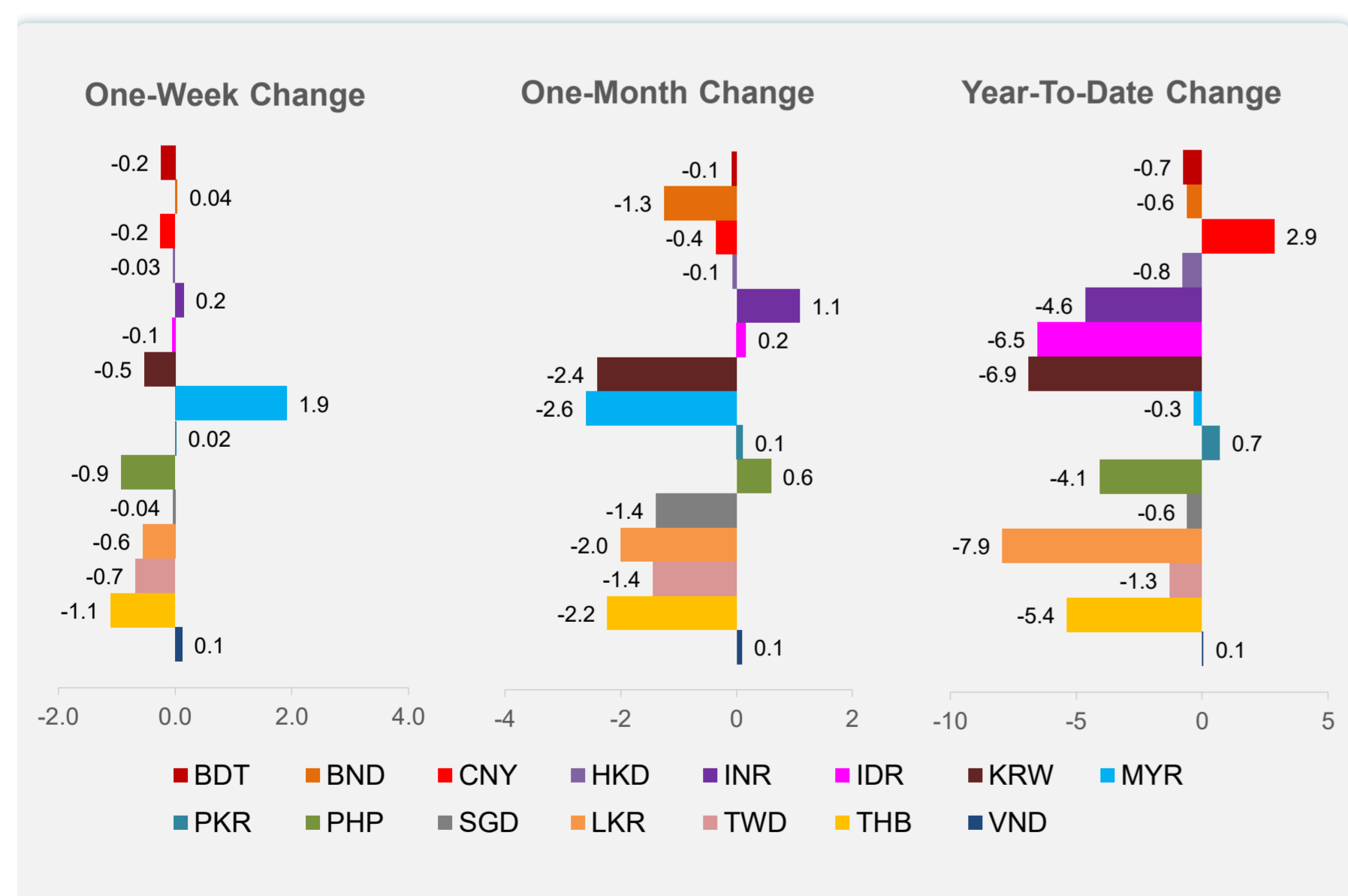
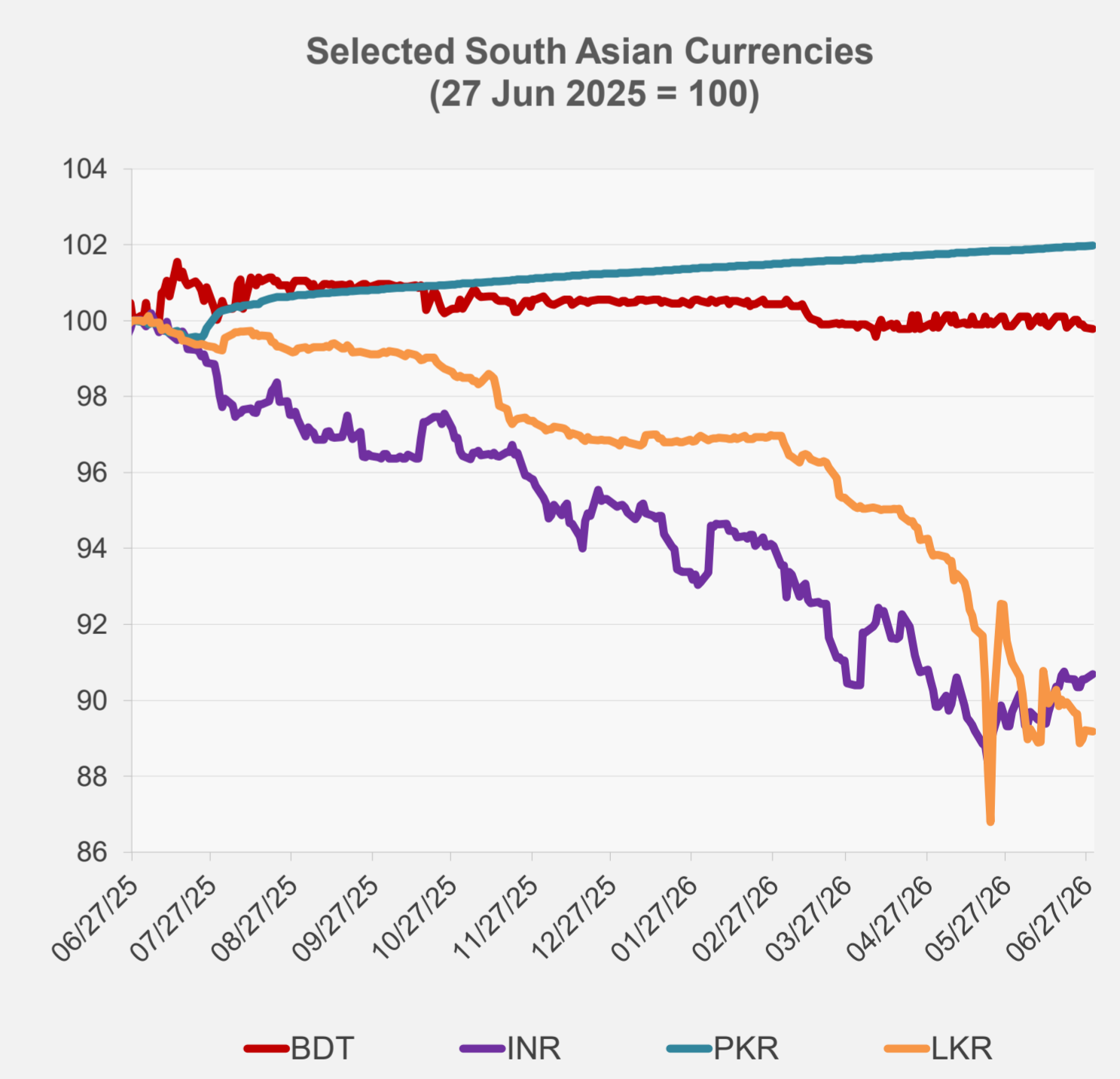
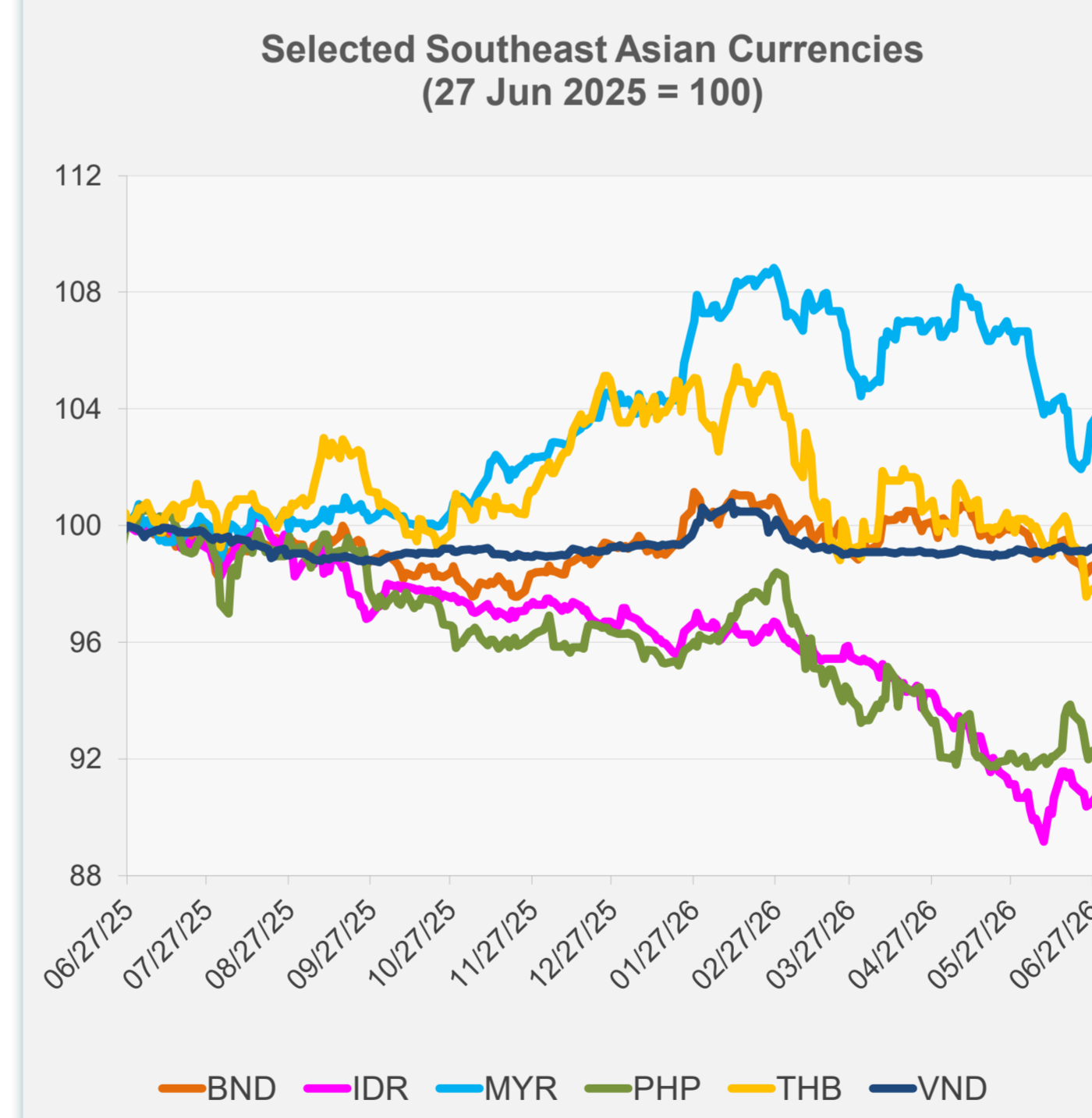


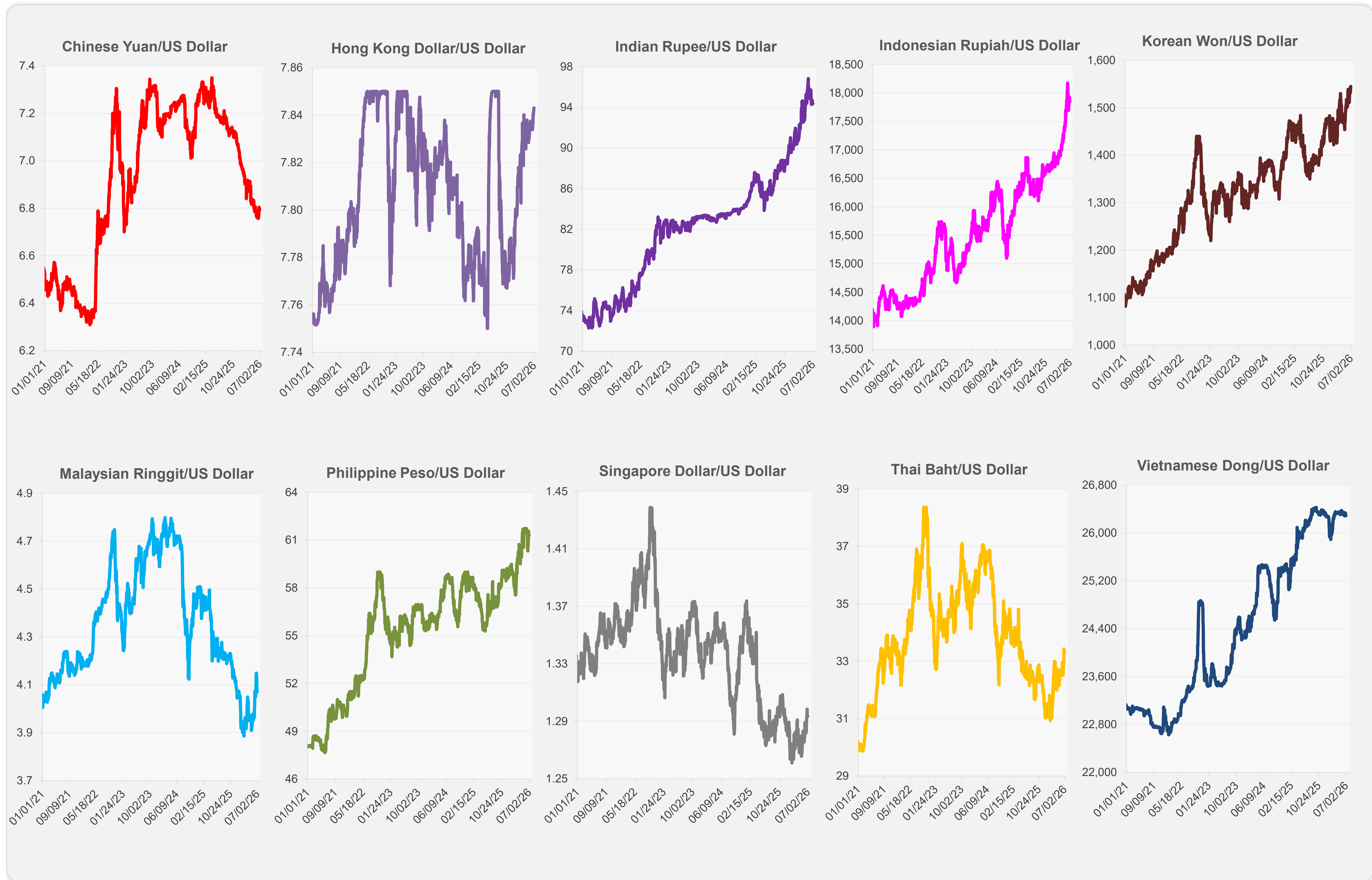
	Latest Closing	% change from Previous Day	% change from 01-Jan-26
Euro	0.88	0.24	-2.74
Japanese yen (JPY)	161.83	-0.12	-3.61
Bangladeshi taka (BDT)	123.15	-0.04	-0.73
Brunei dollar (BND)	1.29	0.09	-0.60
Chinese yuan (CNY)	6.79	0.11	2.87
Hong Kong dollar (HKD)	7.84	-0.02	-0.76
Indian rupee (INR)	94.35	0.14	-4.63
Indonesian rupiah (IDR)	17,840.00	0.39	-6.53
Korean won (KRW)	1,545.20	-0.85	-6.87
Malaysian ringgit (MYR)	4.07	0.41	-0.32
Pakistan rupee (PKR)	278.15	0.01	0.70
Philippine peso (PHP)	61.29	0.16	-4.05
Singapore dollar (SGD)	1.29	0.03	-0.57
Sri Lanka rupee (LKR)	336.25	-0.03	-7.92
Taipei,China NT dollar (TWD)	31.85	0.05	-1.28
Thai baht (THB)	33.29	0.23	-5.35
Vietnamese dong (VND)	26,286.50	0.05	0.05



NIE = Newly Industrialized Economies



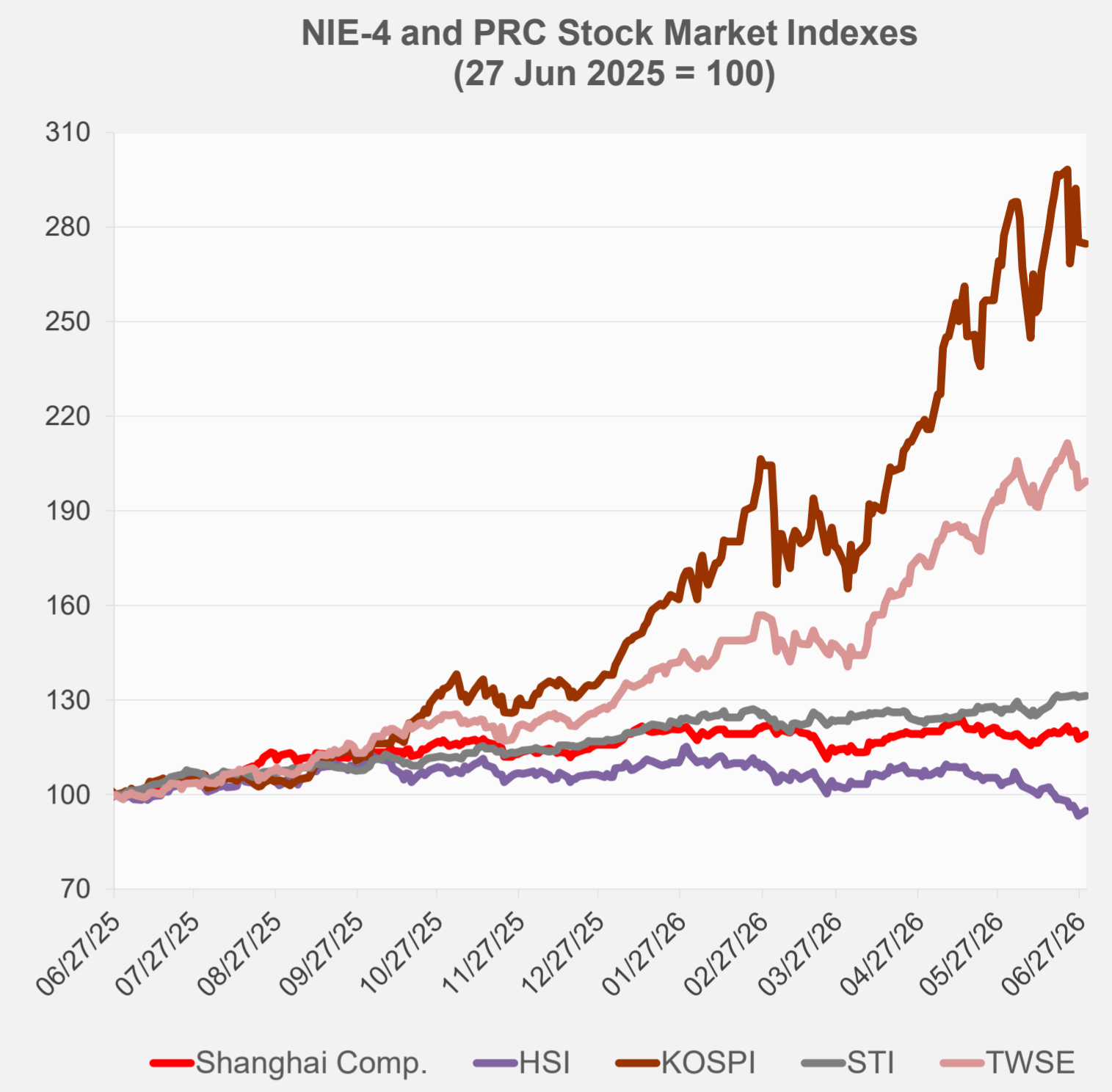
Note: Negative/Decreasing values indicate depreciation of local currency, and positive/increasing values indicate appreciation.  
Source: ADB calculations using data from Bloomberg and Haver Analytics.



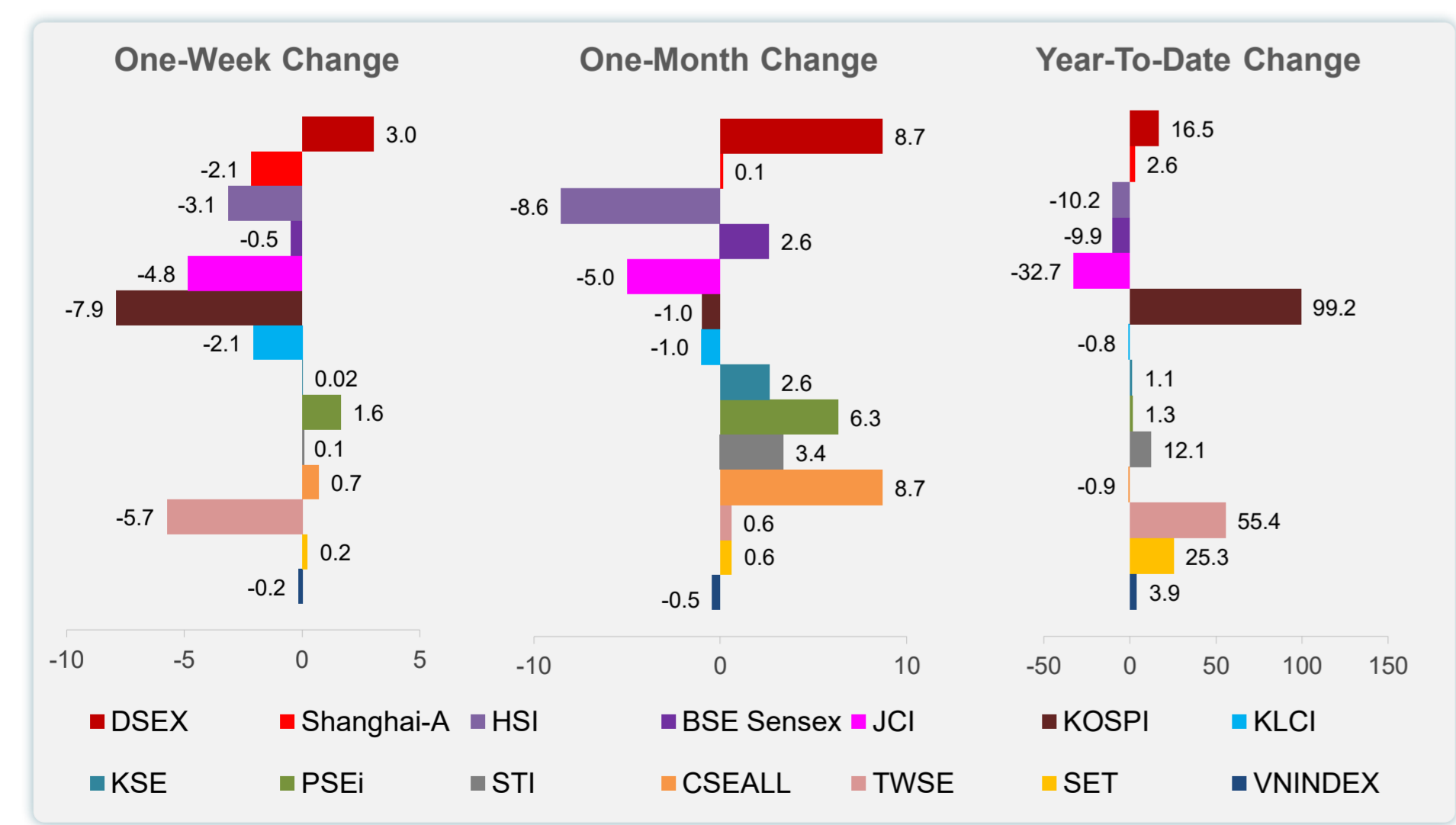
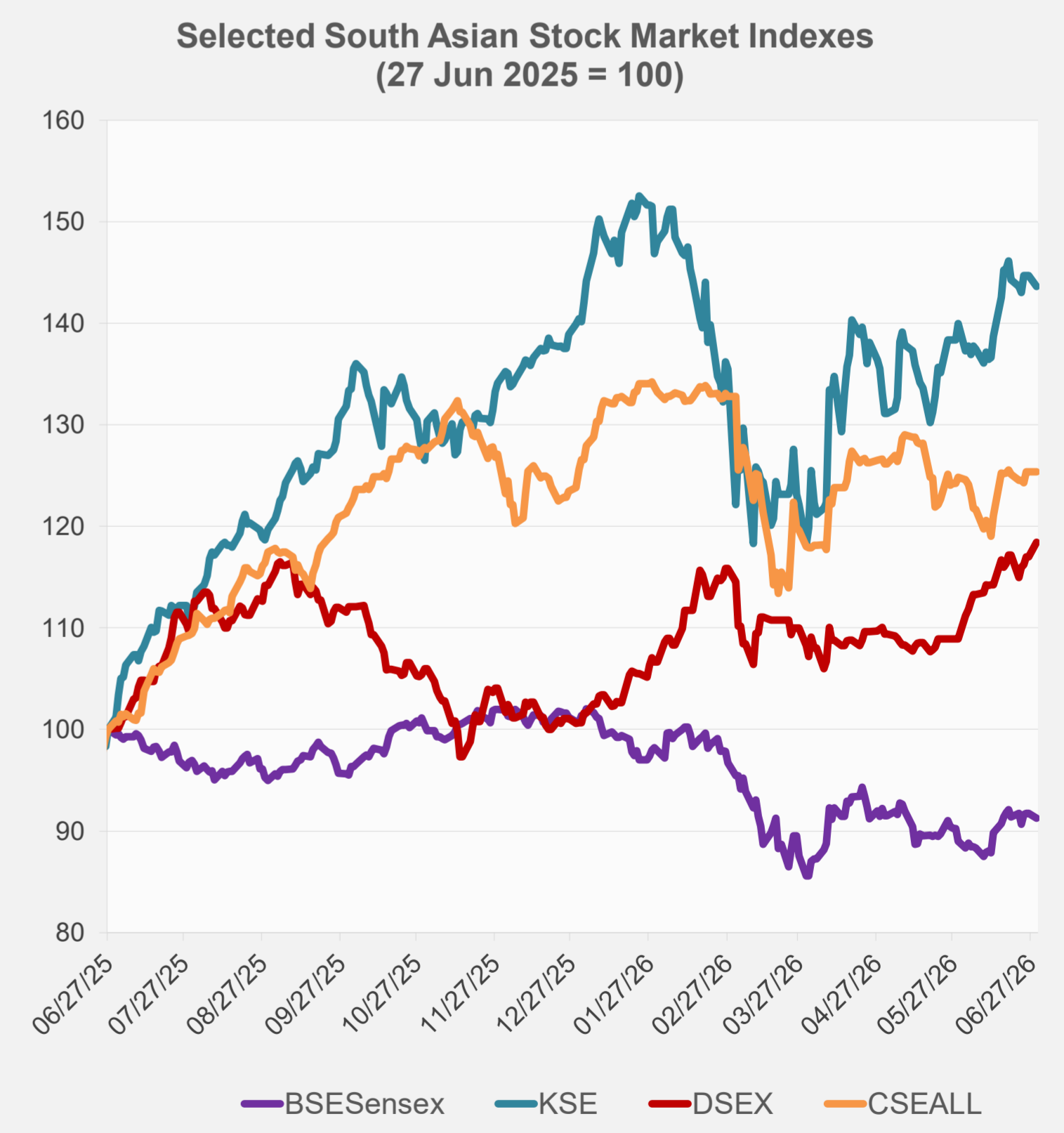
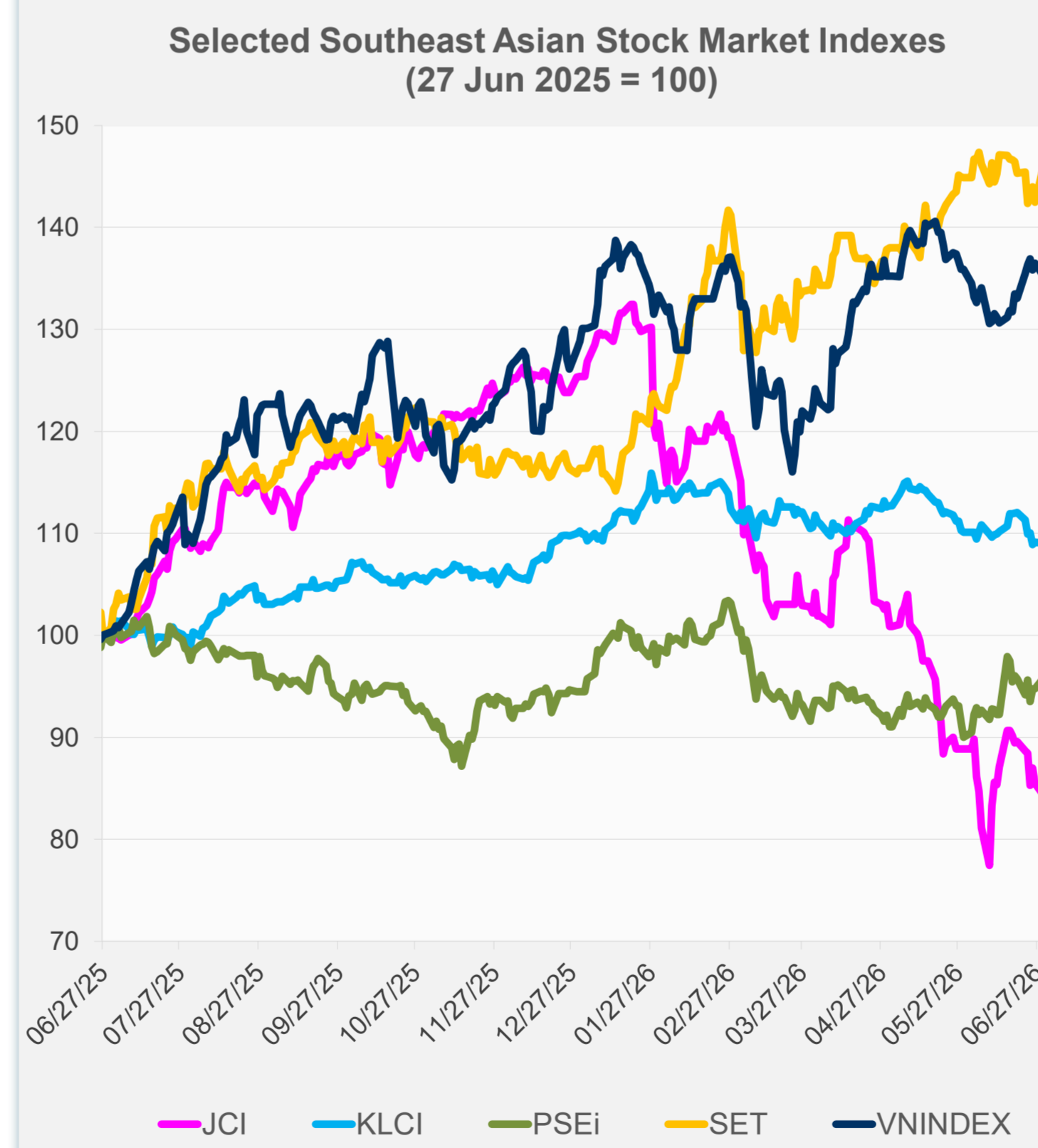
Source: Haver Analytics.

Daily Market Watch  
**STOCK INDEXES**

	Latest Closing	% change from Previous Day	% change from 01-Jan-26
US Dow Jones Ind Avg	52,182.74	0.59	8.57
US NASDAQ	25,820.14	2.07	11.09
US S&P 500	7,440.43	1.18	8.69
UK FTSE 100	14,183.21	-0.64	25.94
EURO STOXX 50	6,231.63	0.16	7.60
Japan NIKKEI 225	69,468.11	0.15	38.00
Bangladesh DSEX	5,722.54	1.23	16.53
PRC Shanghai Comp.	4,073.90	1.16	2.65
Hong Kong, China HSI	23,026.68	1.57	-10.16
India BSE Sensex	76,728.37	-0.48	-9.93
Indonesia JCI	5,820.79	-1.28	-32.68
Korea, Rep. of KOSPI	8,394.65	-0.20	99.20
Malaysia KLCI	1,665.91	-0.11	-0.85
Pakistan KSE 100	178,502.20	-0.73	1.15
Philippines PSEi	6,133.41	1.01	1.33
Singapore STI	5,208.75	0.33	12.11
Sri Lanka CSEALL	22,409.81	0.00	-0.95
Taipei, China TWSE	44,999.90	0.96	55.37
Thailand SET	1,577.81	2.30	25.26
Viet Nam VNINDEX	1,854.97	-0.90	3.95



NIE = Newly Industrialized Economies



Sources: ADB calculations using data from Bloomberg and CEIC Data Company.

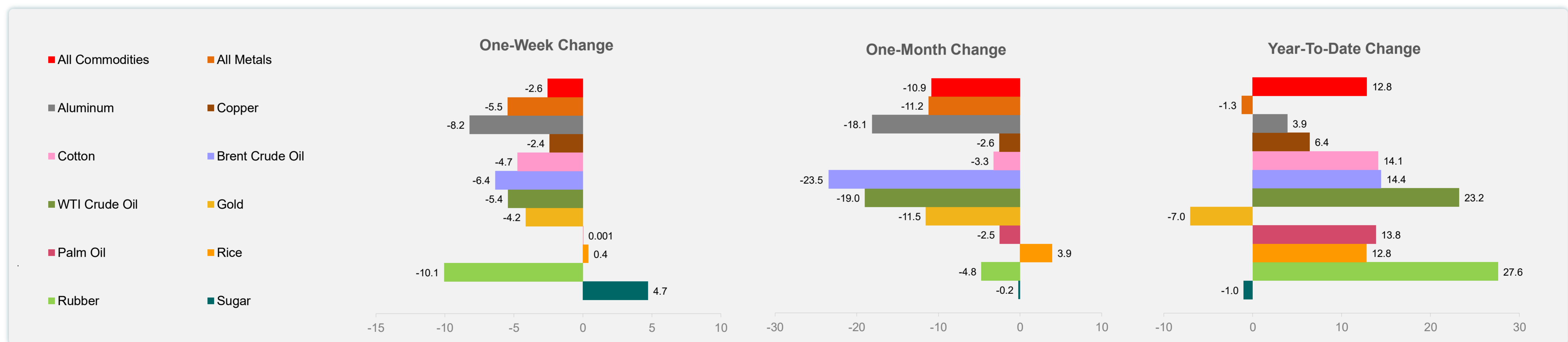
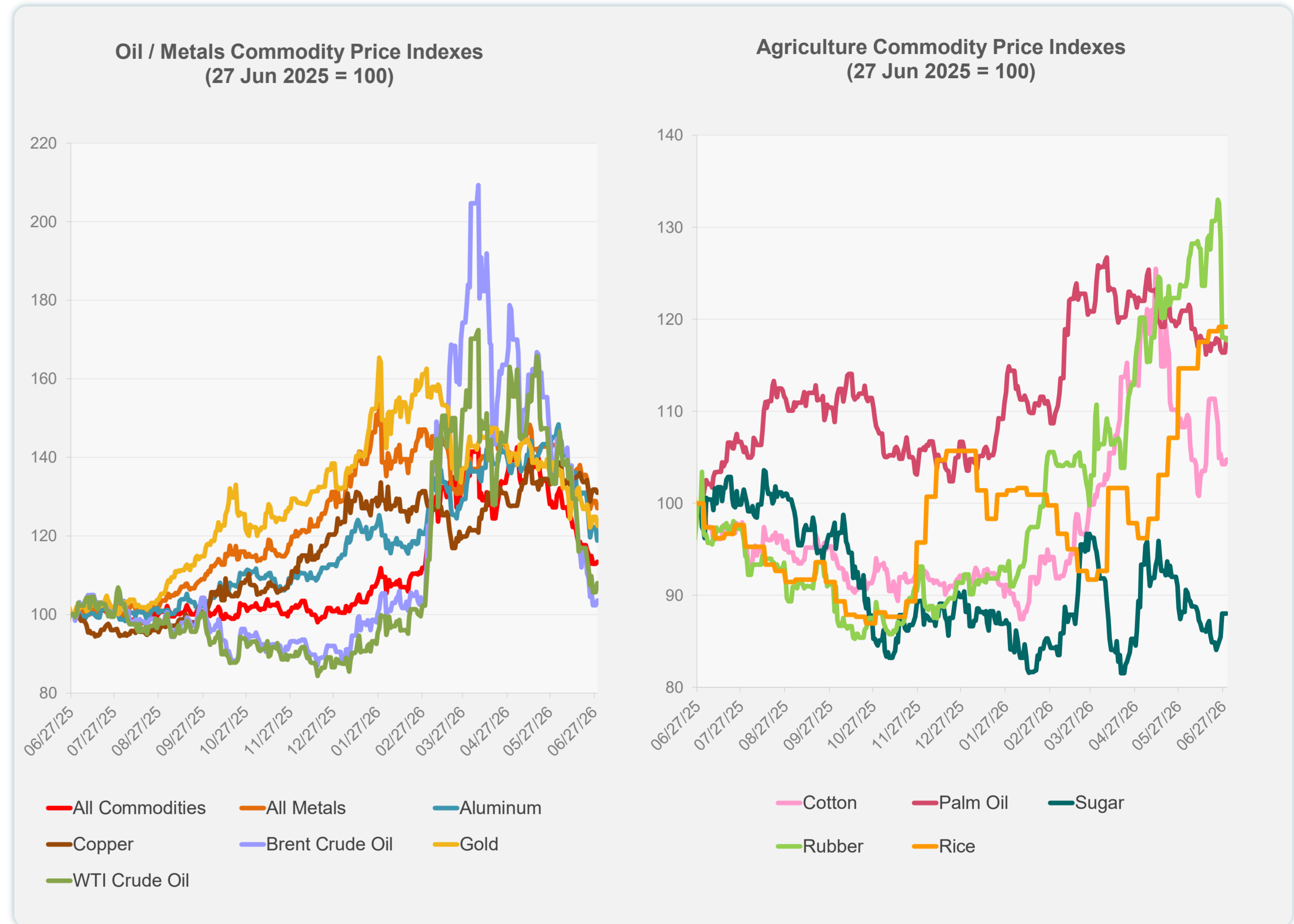


Sources: ADB calculations using data from Bloomberg and CEIC Data Company.

Daily Market Watch  
**COMMODITY PRICES**

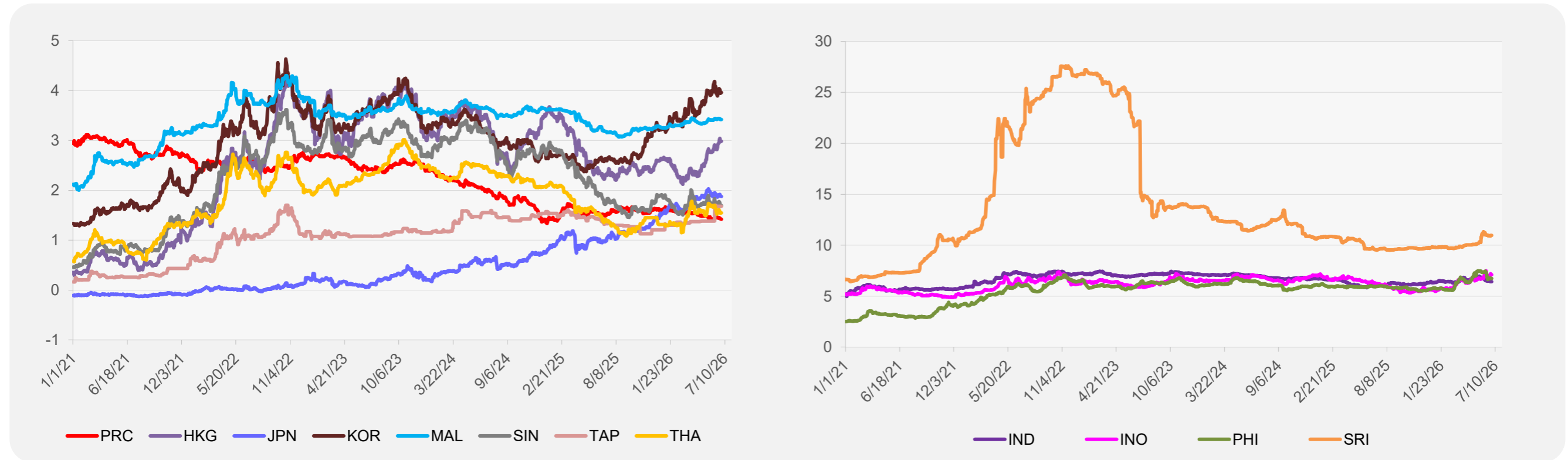
	Unit	Latest Closing	% change from Previous Day	% change from 01-Jan-26
S&P All Commodities	US\$	618.97	0.44	12.84
S&P All Metals	US\$	438.18	-1.42	-1.26
Aluminum	US\$/metric ton	3,084.21	-2.79	3.92
Copper	US\$/metric ton	13,252.81	-0.62	6.42
Cotton	US cents/lb	70.77	0.48	14.11
Brent Crude Oil	US\$/barrel	71.47	1.13	14.44
WTI Crude Oil	US\$/barrel	70.75	2.20	23.21
Gold	US\$/troy oz	4,015.91	-1.78	-7.03
Palm Oil	US\$/metric tonne	1,102.79	1.33	13.85
Rice <sup>1</sup>	US\$/metric ton	503.00	0.00	12.78
Rubber <sup>2</sup>	US\$/kg	274.30	-0.25	27.58
Sugar	US cents/lb	14.64	0.00	-1.01

<sup>1</sup> Latest closing price from 24 June 2026.  
<sup>2</sup> Singapore Exchange, Ribbed Smoked Sheet Rubber.

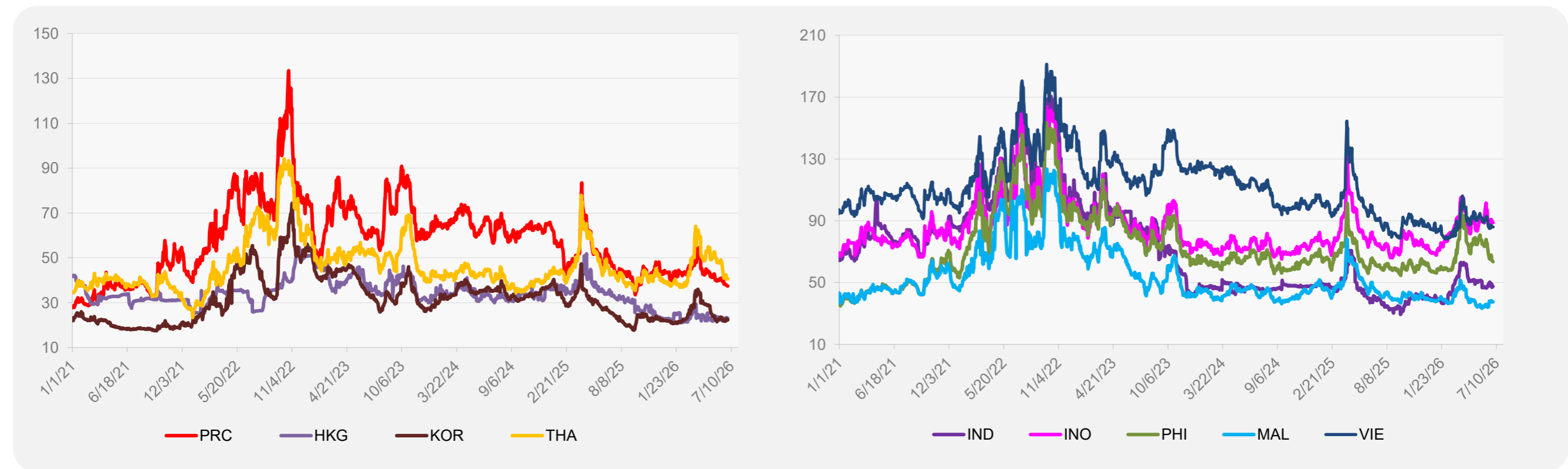


Source: ADB calculations using data from Bloomberg.

### 5-YEAR LOCAL CURRENCY GOVERNMENT BOND YIELDS (%)



### 5-YEAR CREDIT DEFAULT SWAP<sup>1</sup>



<sup>1</sup> In USD and based on sovereign bonds.  
Source: ADB calculations using data from Bloomberg.